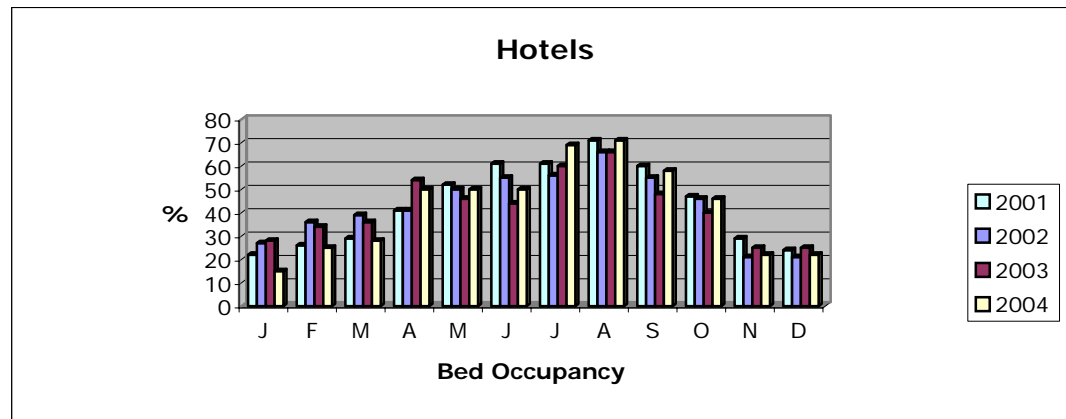


## AYRSHIRE & ARRAN - Accommodation Occupancy %

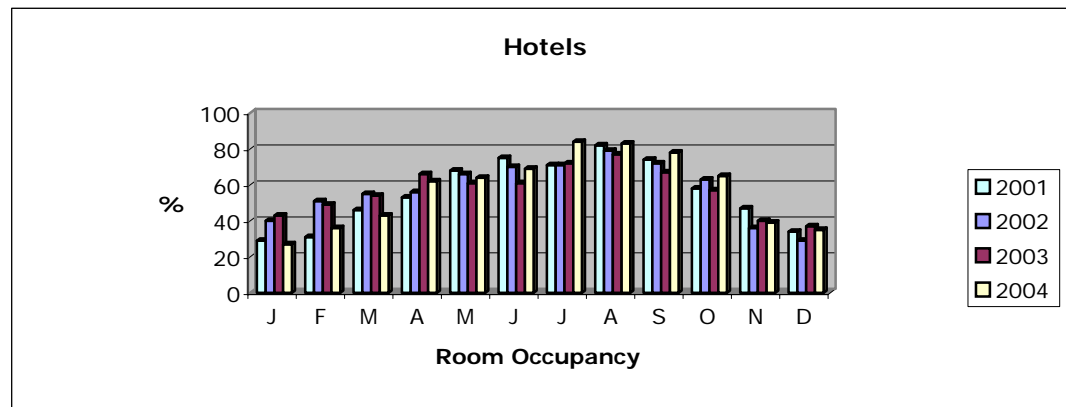
### HOTEL - Bed Occupancy %

	J	F	M	A	M	J	J	A	S	O	N	D
2001	22	26	29	41	52	61	61	71	60	47	29	24
2002	27	36	39	41	50	55	56	66	55	46	21	21
2003	28	34	36	54	46	44	60	66	48	40	25	25
2004	15	25	28	50	50	50	69	71	58	46	22	22



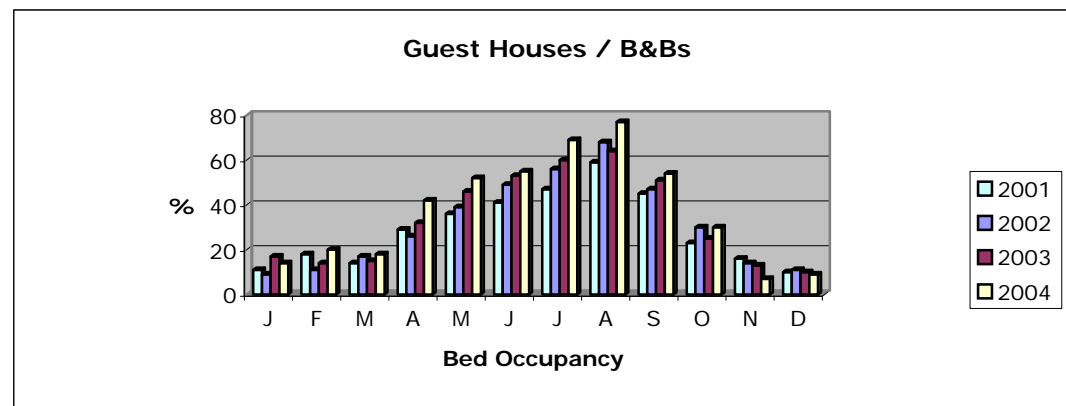
### HOTEL - Room Occupancy %

	J	F	M	A	M	J	J	A	S	O	N	D
2001	29	31	46	53	68	75	71	82	74	58	47	34
2002	40	51	55	56	66	70	71	79	72	63	36	29
2003	43	49	54	66	61	61	72	77	67	57	40	37
2004	27	36	43	62	64	69	84	83	78	65	39	35



### GUEST HOUSE & B&B - Bed Occupancy %

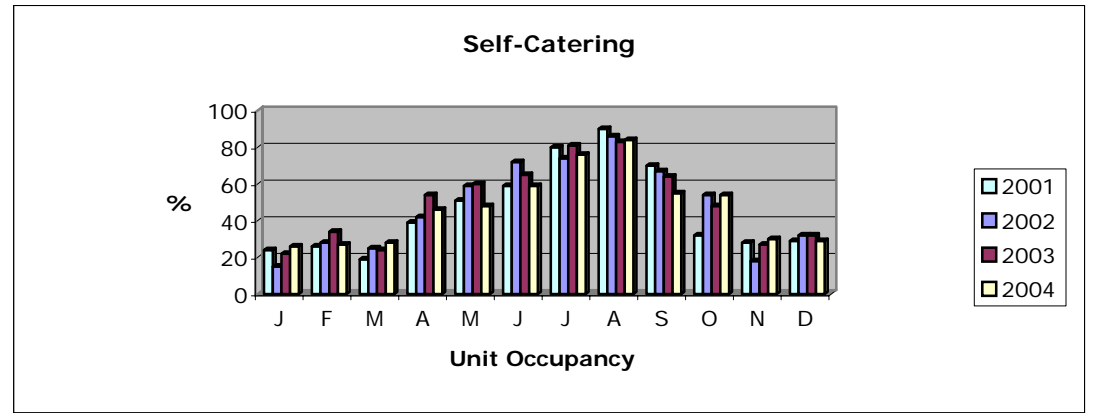
	J	F	M	A	M	J	J	A	S	O	N	D
2001	11	18	14	29	36	41	47	59	45	23	16	10
2002	9	11	17	26	39	49	56	68	47	30	14	11
2003	17	14	15	32	46	53	60	64	51	25	13	10
2004	14	20	18	42	52	55	69	77	54	30	7	9



### SELF-CATERING - Unit Occupancy

%

	J	F	M	A	M	J	J	A	S	O	N	D
2001	24	26	19	39	51	59	80	90	70	32	28	29
2002	15	28	25	42	59	72	74	86	67	54	18	32
2003	22	34	24	54	60	65	81	83	64	48	27	32
2004	26	27	28	46	48	59	76	84	55	54	30	29



### CARAVAN & CAMPING - Pitch Occupancy

%

Please note, these figures are for South of Scotland

	APR	MAY	JUN	JUL	AUG	SEP	OCT
2001	15	31	33	40	45	29	15
2002	28	28	37	45	49	36	20
2003	33	38	42	48	61	37	23
2004	30	34	40	58	52	39	31

